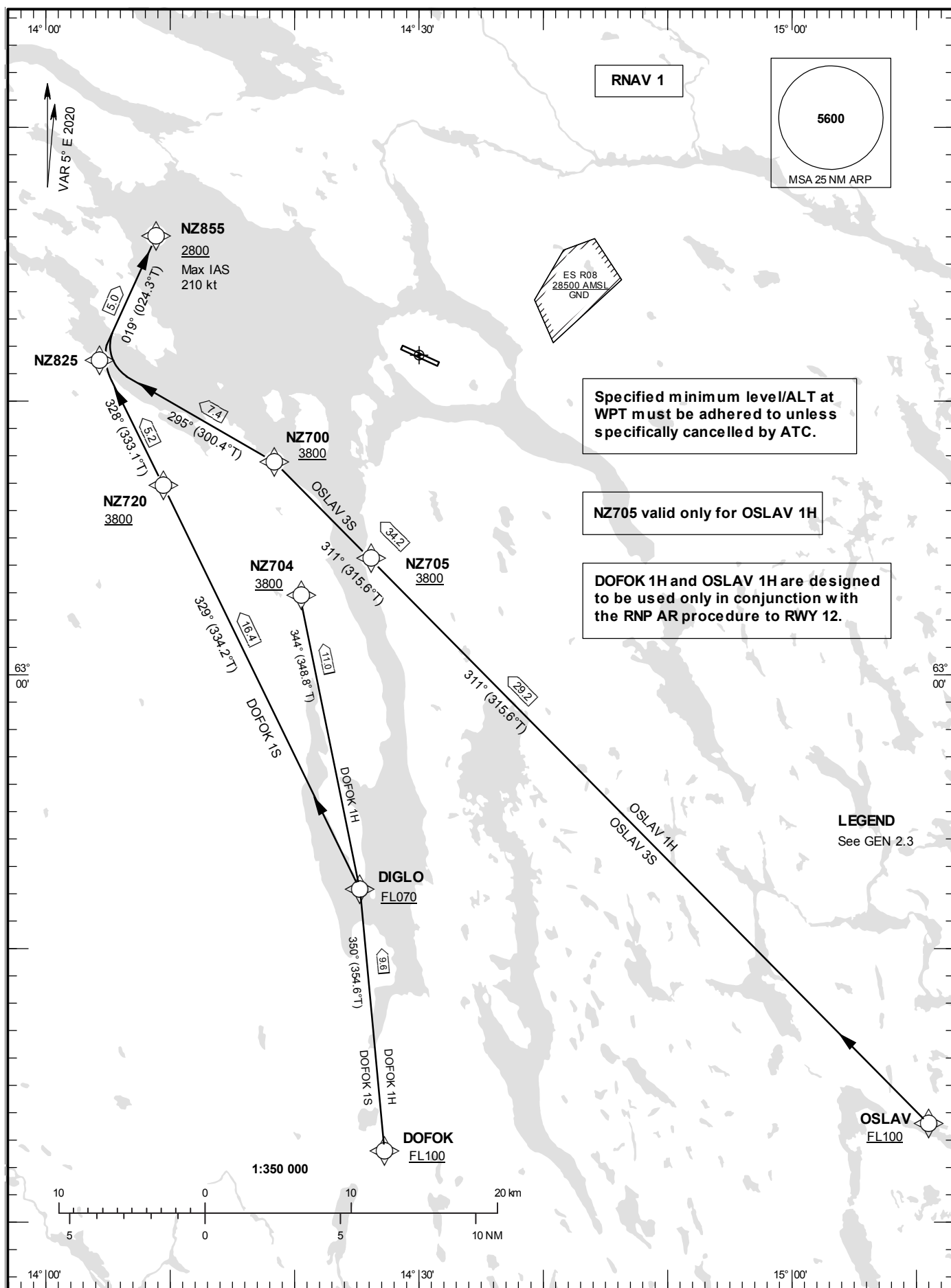


**STANDARD INSTRUMENT  
ARRIVAL CHART (STAR) -  
ICAO**

HGT and ALT in ft  
BRG are MAG (True)  
TA 6000 ft AMSL

ÖSTERSUND TOWER 135.655

**ÅRE ÖSTERSUND  
RNAV (GNSS) STAR  
RWY 12**



**ÅRE ÖSTERSUND****Prescribed Coding of RNAV (GNSS) STAR for RWY 12**

Specified minimum level/ALT at WPT must be adhered to unless specifically cancelled to ATC.

Operators unable flying RNAV shall inform ATC by using phraseology "UNABLE RNAV STAR". ATC will then provide vectors or provide clearance via conventional STAR.

**DOFOK 1S**

Path Desc	Waypoint Identifier	Fly-over	Course °M(°T)	Dist (NM)	Turn Dir	Altitude	Speed Limits (kt)	Rec Navaid	Navigation Specification
IF	DOFOK	-	-	-	-	+FL100	-	-	RNAV 1
TF	DIGLO	-	350 °(354.6°)	9.6	-	+FL070	-	-	RNAV 1
TF	NZ720	-	329°(334.2°)	16.4	-	+3800	-	-	RNAV 1
TF	NZ825	-	328°(333.1°)	5.2	-	-	-	-	RNAV 1
TF	NZ855	-	019°(024.3°)	5.0	-	+2800	-210	-	RNAV 1

STAR instruction: DOFOK (FL100 or above) - DIGLO (FL070 or above) – NZ720 (3800 ft or above) – NZ825 – NZ855 (max IAS 210 kt, 2800 ft or above).

**DOFOK 1H**

Path Desc	Waypoint Identifier	Fly-over	Course °M(°T)	Dist (NM)	Turn Dir	Altitude	Speed Limits (kt)	Rec Navaid	Navigation Specification
IF	DOFOK	-	-	-	-	+FL100	-	-	RNAV 1
TF	DIGLO	-	350 °(354.6°)	9.6	-	+FL070	-	-	RNAV 1
TF	NZ704	-	344°(348.8°)	11.0	-	+3800	-	-	RNAV 1

STAR instruction: DOFOK (FL100 or above) - DIGLO (FL070 or above) – NZ704 (3800 ft or above).

The RNAV STAR DOFOK 1H is designed to be used only in conjunction with the RNP AR procedure to RWY 12.

**OSLAV 3S**

Path Desc	Waypoint Identifier	Fly-over	Course °M(°T)	Dist (NM)	Turn Dir	Rest Alts (ft AMSL)	Speed Limits (kt)	Rec Navaid	Navigation Specification
IF	OSLAV	-	-	-	-	+FL100	-	-	RNAV 1
TF	NZ700	-	311°(315.6°)	34.2	-	+3800	-	-	RNAV 1
TF	NZ825	-	295°(300.4°)	7.4	-	-	-	-	RNAV 1
TF	NZ855	-	019°(024.3°)	5.0	-	+2800	-210	-	RNAV 1

STAR instruction: OSLAV (FL100 or above) – NZ700 (3800 ft or above) – NZ825 – NZ855 (max IAS 210 kt, 2800 ft or above).

**OSLAV 1H**

Path Desc	Waypoint Identifier	Fly-over	Course °M(°T)	Dist (NM)	Turn Dir	Rest Alts (ft AMSL)	Speed Limits (kt)	VPA/ RDH	Navigation Specification
IF	OSLAV	-	-	-	-	+FL100	-	-	RNAV 1
TF	NZ705	-	311°(315.6°)	29.2	-	+3800	-	-	RNAV 1

STAR instruction: OSLAV (FL100 or above) – NZ705 (3800 ft or above).

The RNAV STAR OSLAV 1H is designed to be used only in conjunction with the RNP AR procedure to RWY 12.